



### **About Lollypop Farm**

- Lollypop Farm, the Humane Society of Greater Rochester is private nonprofit animal shelter funded primarily through individual donations from people in the community, like you!
- Originally, The Humane Society of Rochester was founded to protect the mules, horses, and oxen that were overworked digging the Erie Canal. Lollypop Farm was founded on November 20<sup>th</sup>, 1873 to prevent cruelty to both animals and children. In 1897, we split into our own animal-based organization.
- Lollypop Farm has roughly 95 staff and over 800 volunteers.
- Lollypop Farm works very hard to adopt homeless pets. There is never a time limit on how long pets remain available for adoption. Pets come to us as strays, from animal cruelty cases or from owners who can't keep their pets.
- Through a variety of programs (Spay/Neuter Incentive Program, Behavior Training Classes, Community Outreach and Humane Education Programs) Lollypop Farm's staff and volunteers work hard to help keep pets in their homes.



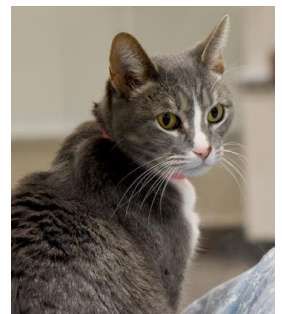
### **Small Animal Room**

- This room houses rabbits, guinea pigs, hamsters, rats, mice, and other small rodents who are available for adoption.
- Each animal has a soft place to lay, a spot to hide, enrichment toys, and food/water. Many of the supplies you see are donated or purchased thanks to your donations.
- **Did you notice** the yummy salads in the animals enclosures? We are grateful for the delicious produce that is donated from the Pittsford Wegmans!



### **Day Lily Cat Adoption Center**

- We ask that you use **quiet voices** while visiting the cats and kittens waiting to be adopted.
- There are two large catteries designed to provide entertainment and exercise for the cats and kittens. Studies have shown that cats are more likely to be adopted from settings where they live in a community. Even our small colonies and condos may house more than one cat.
- Smaller colonies are for groups of kittens or a few adult cats. For cats who prefer privacy, we have single cat condos available as well.
- Each cat's living area is customized for their needs. Cats who have curtains hung on their cage prefer privacy, while cats in the large colonies are typically more interested in socializing with people and other cats.
- Cat and dog food is donated by Fromm Family Pet Food and Pet\$aver Healthy Pet Superstore.



- **Did you notice** that each cat has a comfy blanket and some stuffed animals to snuggle? Many of the cat blankets you see have been handmade and donated by kids and adults in the greater Rochester community. When a cat is adopted, they go to their new home with their blanket and toys.

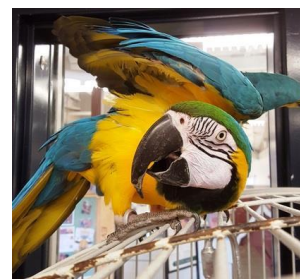
### Halle Polisseni Dog Adoption Center

- Dogs available for adoption are housed in individual kennels in a suite. The suite system reduces noise and stress, keeping dogs happier and healthy during their stay.
- Kennels have heated floors (72-74°) and automatic water systems.
- All dogs waiting for adoption are walked by trained volunteers or staff at least twice a day no matter the weather is like.
- Dogs, cats, rabbits and potbellied pigs are all spayed or neutered, provided vaccinations, and receive any critical veterinary care before being made available for adoption. Donations from the community make this possible!
- **Did you notice** the toys or a paper box in the dogs' kennels? Our dedicated behavior staffs create enrichment plans for each dog.



### Bird Room

- Many different kinds of birds from parakeets, to doves to several kinds of parrots, maybe available for adoption. To adopt a bird, we ask that you make an appointment with our bird specialist.
- **Did you know** some parrots can live to be over 80 years old!
- Parrots require a lot of special care and attention. They are extremely social and are used to living in a flock. They communicate with one another in that flock by squawking and chirping. If you have a parrot at home expect to be treated like a fellow member of their flock!



### Indoor Barn

- When farm animals arrive at Lollypop Farm, they are quarantined in the Indoor Barn for a period of time. This allows farm staff to get to know the behavior and personalities of the arriving animals. Keeping them in the inside barn also allows staff to watch for any medical issues that may arise.
- Farm animals require specialized care which is made possible through community support.



### The Farmyard & Evelyn Z Diehl Equine Training and Rehabilitation Arena

- When walking in the Farm Yard and Petting Area, **please do not feed the animals and use walking feet.** Farm animals can frighten easily when people are running and yelling.
- It's hard to miss the giant fiber glass bull that lives at the entrance to the Petting Area. His name is Elmer.
- Most of the farm animals are available for adoption. Adopters must have a home/property that is zoned for farm animals.
- Many of the horses that are surrendered to Lollypop Farm need additional training or medical care before they can become available for adoption. Our new Equine Training and Rehabilitation Arena makes this possible.



**Thank you for visiting Lollypop Farm!**

**For more information on adopting a pet, donating, or participating in our programs, please visit [www.lollypop.org](http://www.lollypop.org)**