

FUTURE FORWARD

2023 ANNUAL REPORT



Lollypop Farm



VISION

A just and compassionate world for all animals.



MISSION

Together with our community, we better the lives of animals through justice, prevention, and life-saving care.



CORE VALUES

We embrace and recognize that Lollypop Farm donors are the heroes of our work — voluntarily offering time or money, no matter the amount — to support our mission. Together, our core values unify and guide us to provide the best service to the animals, our community, our organization, and ourselves.

COMPASSION: We show empathy and sympathy for what people and animals are experiencing through positive and constructive actions.

COMMUNICATION: We engage in a two-way process to exchange thoughts, feelings, and ideas in pursuit of a mutually-accepted goal or direction.

FLEXIBILITY: We are willing and comfortable adapting to new circumstances and conditions.

COMMITMENT: We persevere in our efforts to achieve our mission.

TEAMWORK: We collaborate and communicate to achieve common goals, understanding that the organization works best when unified.

INTEGRITY: We pursue our mission with honor, fairness, and respect for animals, individuals, the organization, and our community.

RESPECT: We show consideration and professional regard for all aspects of the organization.





Alice Calabrese, CAWA

Certified Animal Welfare Administrator

President and CEO

Lollypop Farm, Humane Society of Greater Rochester

In 2023, Lollypop Farm celebrated its rich history and galvanized efforts to prepare for an even brighter future. Last year marked the 150th anniversary of our organization. I was delighted to share the evolution of Lollypop Farm with our community. From the very beginning through today, Lollypop Farm has continued to help those who are unable to speak for themselves.

Today, our community of pet lovers faces new challenges. The veterinary crisis has prevented local families from accessing important preventative and emergency services. Many families are experiencing economic hardship and struggle to feed and care for their furry family members. Our neighborhoods are experiencing more violence against animals and people than ever before. As our community's needs change, so does Lollypop Farm. Our focus shifts towards providing aid to families to help keep people and pets together, in addition to finding new homes for homeless and abused pets. Nationally, shelter pets are experiencing longer stays, and the pets in our care have been no exception to this trend.

Our 150-year history is a testament to the support of our community, the resiliency of staff and volunteers, and the impact people like you make each day. This year, we took that spirit to heart and developed an

expansion project to address and overcome the challenges our community is facing. The Lollypop Farm Kindness for All Kind campaign will transform Lollypop Farm into a premier resource center. The future learning center will make humane education accessible to everyone, ultimately preventing violence and cruelty in our community. It will also provide learning opportunities to engage and inspire the next generation of veterinarians and animal care workers. A donation center will ensure families in need have access to quality food and supplies for their adored pets. And the animals at Lollypop Farm will have new spaces designed with them in mind to alleviate stress on their journey to a new home.

The future has many challenges, but I am confident that together with our community, we will succeed. Thank you for joining us on this journey. You are essential to providing justice for homeless and abused animals, support for families in need, and resources for a better future for the animals in our community.

Our future is brighter because of you.

With Lollypop Love,

Alice

ADOPTIONS



marshall



Marshall was brought to Lollypop Farm as an adorable and loving puppy, so tiny that he could fit in the palm of your hand. While he was a happy dog, he was lethargic, uncoordinated, and struggled to stand. Thanks to you, Lollypop Farm nurtured Marshall with the love and care he needed to thrive.

When attempting to walk, Marshall would either tumble onto his side or end up facedown with his nose on the floor, but this was more than just a cute, uncoordinated puppy. The Lollypop Farm Klingenstein Veterinary Clinic ran bloodwork to check for infectious diseases and tested Marshall for neurological concerns, but Marshall's tests all came back negative.

Remarkably, throughout these trials, Marshall's fighting spirit endured. From his bed, he would muster the energy to roll over, inviting belly rubs and showering

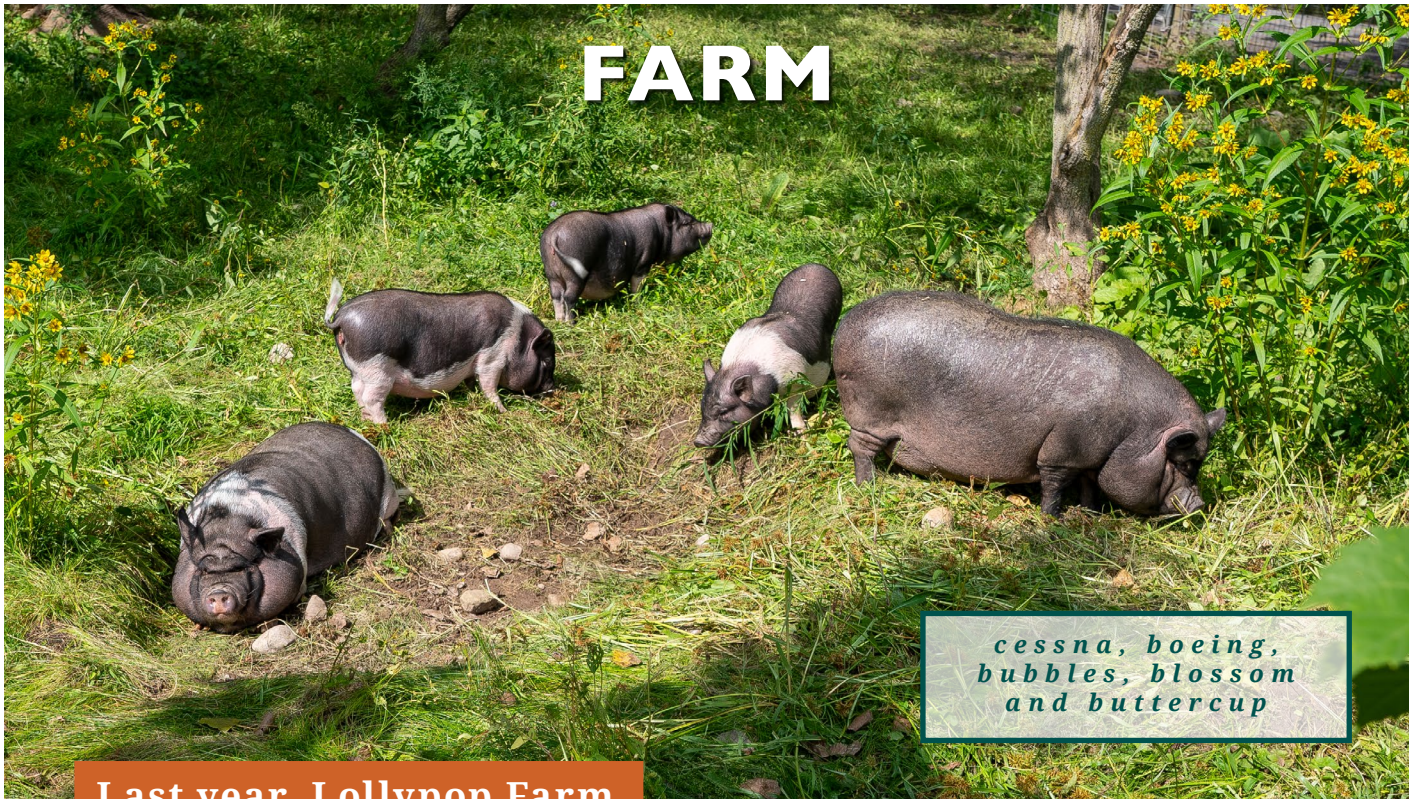
our staff with unwavering affection. After introducing pain medication to his care plan, Marshall started to show signs of improvement. The consensus was that with a special person by his side Marshall would be able to live a happy life.

Fate intervened when Dana Bulger, a former employee at Lollypop Farm, met Marshall in the foster care office. As a child, Dana had been diagnosed with Hereditary Multiple Exostosis, which causes bone spurs and growing pains. While in college, Dana found herself slowly losing mobility to the point that she could not walk or stand for more than a few minutes. Determined not to surrender to her condition, Dana embarked on a journey to regain her independence through physical therapy, slowly but surely making progress.

Dana found a kindred spirit in Marshall. Once Marshall was

*Lollypop Farm
provided second
chances for
4,198 pets
in 2023.*

healthy enough to leave Lollypop Farm, Dana fostered him in her home and helped him gain strength. Every day as their bond grew stronger Dana knew she had found the dog that was meant for her. Though small in stature, Marshall exuded a bright spirit. After a month of fostering, the decision was clear—Dana officially adopted Marshall, cementing their status as a family. Now, Dana is off on new adventures with Marshall in tow!



*cessna, boeing,
bubbles, blossom
and buttercup*

Last year, Lollypop Farm

cared for over 30 potbellied pigs.

After being abandoned in the city of Rochester, Cessna was brought to Lollypop Farm. Despite the best efforts of the farm staff, the sweet potbellied pig would not eat. It quickly became apparent that something was very wrong. Cessna needed emergency medical care beyond what could be provided at Lollypop Farm. Thanks to friends like you, farm staff were able to bring her to Cornell University's emergency department.

After her stay at Cornell's emergency department, farm staff started offering her many different kinds of food and monitored her to see how much she was eating.

Cessna made a full recovery. Now she, Boeing, and their three piglets have all been adopted!

For emergency care like this, Lollypop Farm's Puma's Fund is there to help. Puma's Fund is dedicated to making emergency veterinary care possible when the services required are too specialized or complex for the resources we have at Lollypop Farm.



EQUINE



*hank, jenny,
lilac and joey*

A quartet of donkeys were brought to Lollypop Farm when the barn they were living in unfortunately burned down in March. Having adopted from Lollypop Farm in the past, their owners knew they could count on us and friends like you for help. The donkeys were originally brought in for temporary housing until a new barn could be built. The quartet quickly became a hit with staff and visitors. Their paddock shared a fence with the dog play yard, and the donkeys could often be seen trotting up and down along the fence playing with the dogs on the other side.

After a few months, their owners surrendered custody of the donkeys to Lollypop Farm when they realized it wasn't going to be feasible to bring them home. While a difficult and heartbreaking decision, they knew they could count on our farm staff to find them a new home where they would be loved.

Not long after that, a family with a farm saw these silly



friends and fell in love. They already owned donkeys and were dedicated to providing their animals with plenty of enrichment and love. We knew immediately it was the perfect home. They embarked on their new adventure in early June. While they are missed here at Lollypop Farm, we are so happy that Hank, Jenny, Lilac, and Joey now have a new family to dote on them.

THE FUTURE



Through our Kindness for All Kind campaign, Lollypop Farm will expand the farm yard area with an East Campus located across Victor Road. This new campus will include a quarantine area for farm friends, expanded pasture space, and a veterinary space for farm animals.



Thank you to the Kindness for All Kind Campaign Co-Chairs Ed Shill and Molly Branch Shill. Their lead gift and commitment to this regeneration project will help transform Lollypop Farm into one of the foremost community-based animal welfare and education centers in the country.

20 horses and other equine were adopted into new loving homes in 2023.



KLINGENSTEIN VETERINARY CLINIC



In the heat of the summer months, a Royal Palm turkey was found wandering the streets with wounds to his right side. He was brought to Lollypop Farm for immediate veterinary care and safe housing with our loving farm staff. Dr. McNamara and the veterinary technicians at the Klingenstein Veterinary Clinic cleaned and bandaged his wounds and monitored him while he healed.

Despite his ordeal, his personality began to shine. The staff named him Pablo and watched him blossom. Pablo got his happy ending after he was medically cleared and adopted, thanks to donors like you.

9,131
surgeries were performed in 2023.

5,332
exams were performed in 2023.

2,381
surgeries were provided through the Spay/Neuter Incentive Program (SNIP) to community pets.

29,264
pounds of food were given to community members in 2023.

THE FUTURE

COMING SOON – Lollypop Farm is in the planning stages for a Mobile Veterinary Clinic. While details are still to be determined, this mobile unit will allow Lollypop Farm veterinary staff to extend operations to areas throughout Rochester for vital services such as vaccines. Thank you to Senator Jeremy Cooney for securing the New York State grant to help fund the mobile clinic.

HUMANE LAW ENFORCEMENT



ANIMAL EMERGENCY RESPONSE TEAM (AERT)

After receiving a first-hand report from a Good Samaritan, the Lollypop Farm Humane Law Enforcement Department set out to investigate a home in Gates suspected to have too many pets. What they discovered was shocking.

On June 8th and 9th, Lollypop Farm staff went to the house and seized 107 cats from deplorable conditions. With cats still hiding in the house the team set up humane traps and over the course of a couple of weeks total of 209 cats were eventually removed from the home. The homeowner was arrested in September 2023 on multiple charges of neglect. His trial is ongoing at this time.

With the increase in Humane Law Enforcement cases involving animal hoarding, Lollypop Farm has created a team to help rescue large numbers of animals, the Animal Emergency Response Team (AERT). AERT takes the Lollypop Farm mission for animals to the very doorsteps where help is needed most. Working alongside emergency response teams, these professionals are specially trained to respond to emergencies like household fires, environmental and weather-related emergencies, and more.

Team members come from departments throughout the shelter including animal care staff, humane law enforcement, farm and equine, and communications.

AERT team members took part in a two-day training program for disaster response, emergency sheltering, and more.



Humane Law Enforcement Investigators responded to **2,391** calls for service in 2023.

452 animals were seized from unsafe environments.

Humane Law Enforcement Investigators went to **99** outreach events, talks, and other community engagements.

BEHAVIOR

LONG-STAY FRIENDS

Across the country, many pets, particularly large-breed dogs, are experiencing longer stays in shelters. There is no time limit for how long a pet can stay at Lollypop Farm until they find their perfect fit, and thanks to your support they can receive vital services including behavioral support while in our care.

911

people received support from the Lollypop Farm behavior team to help keep their pets in their homes.

880

cats received behavior support during their stay at Lollypop Farm.

Doggy Day Out has helped many pets experience time outside the shelter, including Rocky Mountain, who went on a walk with a new friend.



Our Behavior Team also works with scared dogs like Asa, who after months of cowering inside a crate in her kennel, experienced time outside!



574

dogs received behavior support to help them during their time at the shelter.

ROSE

The behavior team doesn't just work with dogs, cats sometimes need help too. Rose is a beautiful orange cat who wasn't doing well in the shelter. She would grumble and swat due to her stress. Behavior staff started slowly working with Rose to help her feel less stressed, offering treats, letting her sniff a hand, and always keeping a calm demeanor. Rose slowly began to open up, coming near and playing with catnip, and then finally allowed pets! Rose not only started to trust the people around her, but after months at Lollypop Farm she found her perfect home thanks to the efforts of the behavior staff and donors like you.



HUMANE EDUCATION



Humane Education Coordinator Nick speaks to students at Craig Hill Elementary School in Greece.

NO MORE BULLYING

No More Bullying! is a bullying and violence prevention curriculum designed for 3rd, 4th, and 5th grade classrooms. The curriculum includes five, 60-minute lessons that are centered around core values – responsibility, compassion, self-control, and integrity. The No More Bullying! curriculum focuses on a student's ability to practice these core values. If we practice compassion, we can get better at it. This lesson formula builds students' confidence and self-respect and gives them motivation to continue practicing the core values.

"The No More Bullying! curriculum is so special, and every time I teach it, I have such meaningful and thoughtful conversations with the students about topics that many may not have had a chance to discuss with an adult before," states Nick Kohner, humane education coordinator. "I am always impressed by their insights, questions, and experiences. Every student is unique, and the diversity of their perspectives allows them to have involved discussions with their peers and gain a deeper understanding of important topics like bullying, animal abuse, and spreading kindness."

Over 1,000

children and adults received humane education through various programs such as Lollypop Farm Camp, Pet First Aid & CPR, Scout Merit Badges, and more.



THE FUTURE

A FOUNDATION FOR EDUCATION

We want to thank George and Kathy Karpus and the Karpus Family Foundation for their lead gift to the Kindness for All Kind Campaign, which will help build our new Karpus Family Foundation Learning Center at Lollypop Farm. The center will feature classrooms, educational exhibits, and an inviting atmosphere for learning, advocacy, and growth. Education is the best way to prevent violence; therefore, this center will be a haven for fostering empathy, compassion, and the humane treatment of animals and each other in our community.



George and Kathy Karpus and the Karpus Family Foundation



To learn more about the Kindness for All Kind Campaign, visit lollypop.org/kindness.

OUR COMMUNITY

In July, a team from Lollypop Farm partnered with a community organization called The Vineyard to hold a pop-up wellness event in the city of Rochester.

In a little over four hours, health exams and vaccinations for 54 dogs and 19 cats were performed, and hundreds of pounds of food were given to pets in need.

A local groomer, Woofies, also provided mobile grooming services for 14 dogs.

Your support is vital to keep pets with their loving families through community outreach programs like these.



YOUR SUPPORT DIRECTLY
BENEFITS ANIMALS IN NEED

92.6%

of Lollypop Farm's operating income
comes directly from donations.

DONATE WITH CONFIDENCE!



Neighbors like you make life-saving care possible

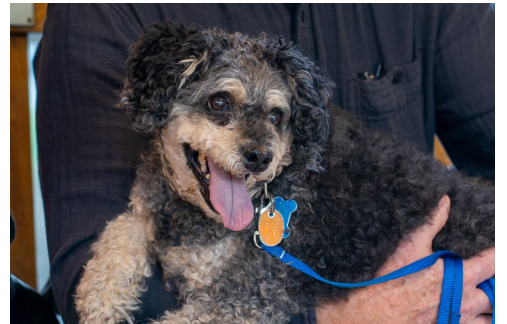


As donors and loving adopters, Don Witzel and Sharon Bryce are devoted supporters of Lollypop Farm. “Some of our best friends have come from Lollypop Farm,” Sharon fondly recalls. From adopting a puppy as a child, to several cats through the years, to their beagle Henry who has since passed, they both feel a strong connection to Lollypop Farm.

Don and Sharon made their first multi-year donation this past year, pointing to the reputation and longevity of Lollypop Farm.

“We just want to help the animals in our area by donating what we can so the talented staff of Lollypop Farm can continue their work,” states Sharon. “We believe in donating locally to help build and strengthen the community.”

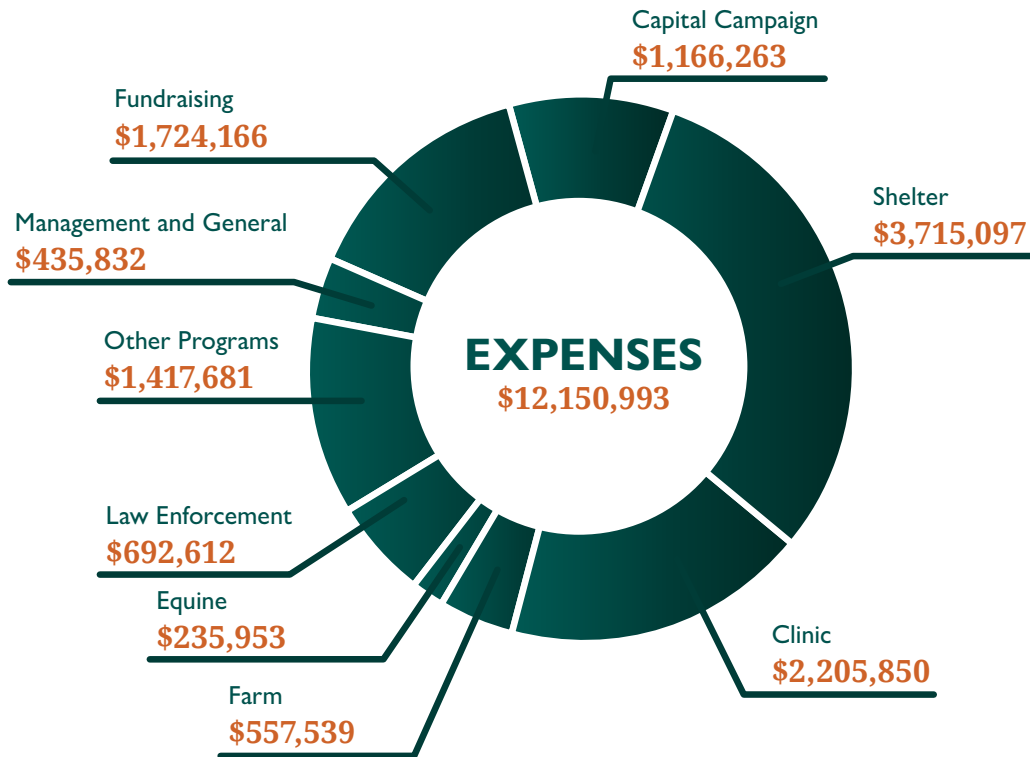
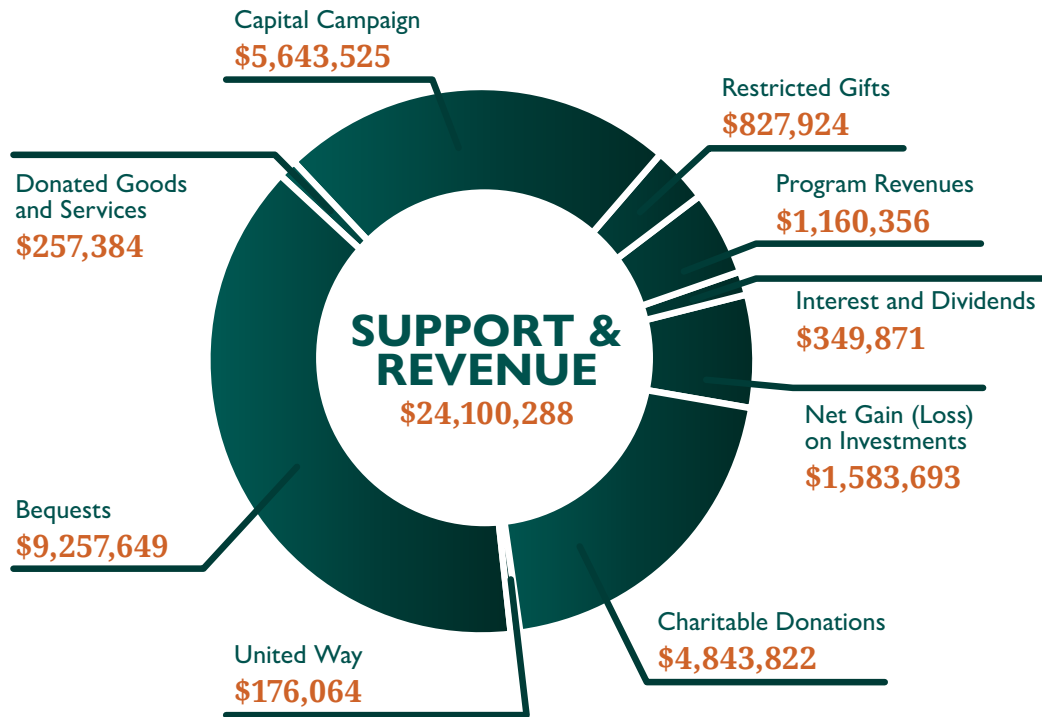
barkley



lollypop.org/bergh

*Lollypop Farm is grateful for neighbors like you,
who help provide life-saving care to so many pets in need.*

FISCAL YEAR 2022 – 2023



The most recent audited financials for the Humane Society of Rochester and Monroe County for the Prevention of Cruelty to Animals, Inc. (aka Lollypop Farm), may be obtained at lollypop.org or upon request by contacting Lollypop Farm at 99 Victor Road, Fairport, NY 14450. This information is also available by contacting the New York State Attorney General Charities Bureau, 120 Broadway, New York, NY 10271. Lollypop Farm is a registered trademark of the Humane Society of Rochester and Monroe County for the Prevention of Cruelty to Animals, Inc. Lollypop Farm, the Humane Society of Greater Rochester, is registered as a 501(c)(3) non-profit organization. Contributions to Lollypop Farm are tax-deductible to the extent permitted by law. Our tax identification number is 16-0743047.

BOARD OF DIRECTORS

Fiscal Year 2022 – 2023

OFFICERS

James A. Spitz, Jr.
CHAIRPERSON OF THE BOARD

**Diane McCue &
David Swinford**
VICE CHAIRPERSONS

Henry Bober
SECRETARY

Corey Mortimer
TREASURER



DIRECTORS

Julie Bazan · CORNELL UNIVERSITY

Henry Bober · PRINCIPAL MECHANICAL ENGINEER

Courtney Brock · STONEBRIDGE BUSINESS PARTNERS

Rev. Alton L. Byrd, Sr. · BRYANT AND STRATTON

Don Chesworth · TULLY RINCKEY PLLC

David Friedlander · MONROE COUNTY SHERIFF'S OFFICE
MOUNTED DIVISION

Don Gress · HONEYWELL (RETIRED)

Dejan Jozic · CONSTELLATION BRANDS

Abby Mastrella · COGNIZANT

Diane McCue · EASTMAN KODAK (RETIRED)

Corey Mortimer · TOMPKINS FINANCIAL CORPORATION

Dr. Henry Schroeder · DVM CHILI ANIMAL CARE (RETIRED)

Ray Shea · MONROE COMMUNITY COLLEGE (RETIRED)

James A. Spitz, Jr. · HARRIS BEACH PLLC (RETIRED)

Craig Stevens · THE BONADIO GROUP

David Swinford · PEARL MEYER & PARTNERS, LLC

Hon. Joseph Valentino · NEW YORK SUPREME COURT
7TH JUDICIAL DISTRICT (RETIRED)

Cindy Yancey · CONSTELLATION BRANDS (RETIRED)

SENIOR LEADERSHIP TEAM

Alice Calabrese, CAWA — PRESIDENT AND CEO

Adrienne McHargue, CAWA — VICE PRESIDENT AND COO

Brenda Krusenstjerna — VICE PRESIDENT AND CFO

Reno DiDomenico — VICE PRESIDENT FOR HUMANE LAW ENFORCEMENT

Terry Knapp, PHR — VICE PRESIDENT FOR ORGANIZATIONAL DEVELOPMENT

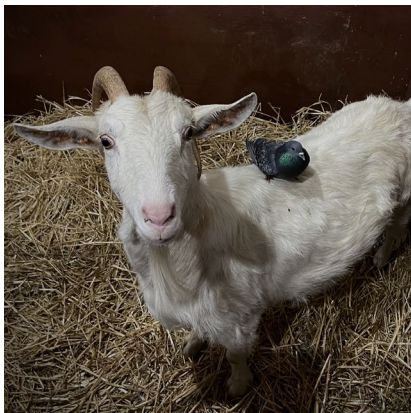
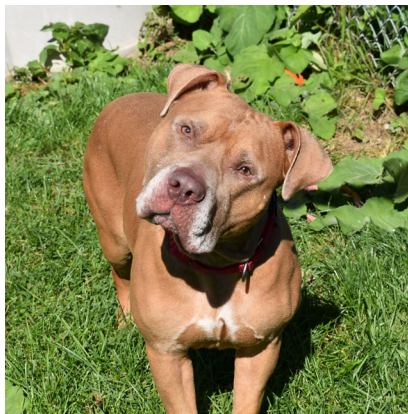
Cathie Wright, CFRE — VICE PRESIDENT OF DONOR RELATIONS

Gerianne Puskas, MBA, CNPM, CFRE — VICE PRESIDENT OF DEVELOPMENT AND COMMUNICATIONS

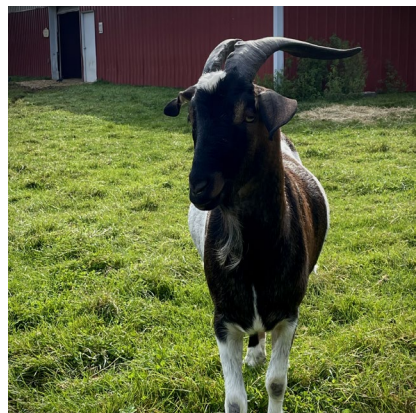
Dr. Cristina Cadavieco, DVM — MEDICAL DIRECTOR



Lollypop Farm



A just and
compassionate
world for all
animals.



Lollypop Farm, Humane Society of Greater Rochester

99 Victor Road Fairport, NY 14450 | Tel: 585-223-1330

www.lollypop.org

